

REED BROTHERS DAIRY

IDAHO FALLS, IDAHO

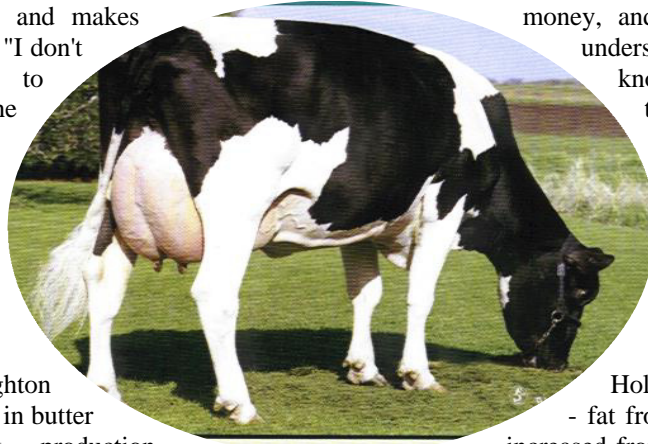
has one of the top milk production herds in the state. They milk 250 cows, twice a day, maintaining a top string of 70 to 80 cows that average over 100 lbs. of milk. When Montmorillonite was introduced into the diet at the level of 1% (of the total ration) dry matter intake dropped from 55.7 lbs. per day to 51.9 lbs., while production actually increased resulting in a nearly 10% improvement in feed efficiency.

JERRY SIMMONDS, a dairy farmer in

CACHE VALLEY, UTAH

says, "I'm not a nutritionist, and I'm not runs a dairy farm, and makes my job a lot easier. "I don't milk tank seems to Montmorillonite, the pounds. General been better!"

trained in scientific analysis, I'm just a guy who money, and Montmorillonite makes understand how it works, but the know, I cut back on tank cuts back on herd health has never



BRIGHTON BLADE

BRIGHTON, COLORADO

Harold Shreeve Brighton reported an increase in butter 3.75 lbs. Milk production day. These gains were the result of adding Trace Minerals to their regular ration. Shreeve also reported that he has reduced his overall feeding of hay for the test animals 320 lbs. per day– an average of 6 lbs. per head.

Holstein dairy farmer, - fat from 3.7 pounds per 100 to increased from 42 pounds per cow per day.

SYLVESTER - NELSON FARMS

MANDAN, NORTH DAKOTA

A dairy herd of 264 cows showed a gain of 8% after adding Trace Minerals to their regular ration. Test conducted by Pharmatox Laboratories, Ames, Iowa, and verified by County Agent, Stanton, Nebraska.

These controlled tests prove conclusively that: 25% to 30% LESS fat passes THROUGH animals fed rations with Trace Minerals added. (Test was conducted on droppings of 4 separate herds.)



FARMER UNION MARKETING ASSOCIATION

DENVER, COLORADO

Field men report dairy cattle are fed a 32% protein with Trace Minerals concentrate ration, balanced and manufactured by Framers Union Marketing Association 20% with 80% plain grains. Under D. H. I. A.



tests have shown increased butter fat up to 6% after three weeks feeding. Increased milk production, better animal health and a definite decrease in feed consumption has been confirmed.

After feeding six to eight weeks, 4 - 6 oz. Trace Minerals daily per animal, reports of better conception rate has been reported by different dairymen. >From the above reports, we feel the Trace Minerals with protein added are definite step forward in a sound-feeding program.

A. J. Schloo, General Manager

LAMON and JOE PERKES

HYDE PARK, UTAH

have reached another goal with their 100-cow dairy, passing the 25,712-lb. mark. This made them the top Utah DHI herd for 2x milking. LaMon reports, "The amazing part of it is that we do it so easily and inexpensively. We have been feeding Montmorillonite since the beginning when we were only at 20,500-lbs. milk average.



DALE BOWERS

BURLEY, IDAHO

manages "Poverty Palace", where he has been using Montmorillonite since 1989. It has helped him to reach top milk production (22,600 lbs.) with highest average lbs. of protein in his DHI area. Dale credits the Montmorillonite in part, for his best first lactation record of 24,880 pounds.